

VENUE SPECS

Heimathafen Neukölln Karl-Marx-Str.141 12043 Berlin www.heimathafen-neukoelln.de Technical Office +49 30 220136981/82



CONTACT

Booking/Concert Department:

Tim Schumann

tim@heimathafen-neukoelln.de

+49 176 21496349

Technical Director:

Aiva Yamac

technik@heimathafen-neukoelln.de

+49 30 220136981

Venue Light Technician:

Tobias Bischoff, Jakob Arnegger

beleuchtung@heimathafen-neukoelln.de

Venue Sound Technician:

Richard Nolting, Paul Börner-Kruse

tontechnik@heimathafen-neukoelln.de

LOCATION

Stage Dimensions (plan attached)

10m x 10m height: 1m clearance: 6,6m

Portal

width: 6m height: 4,6m

Dressing rooms

1 large dressing room with external shower

1 solo dressing room with own shower

1 Catering Area

wifi available in backstage

Parking / Load In

Parking for splitter van or nightliner trailer

No space for nightliner

Load In distance to Stage 50m, no stairs

SOUND

General Sound Limit at 99dB Leq 30min.

FOH

DiGiCo SD9 Red Snapper Stealth Core 2 | latest version | 64/16 | MADI Coax |
2x Cat5 to Stage | Router attached

Monitor Mix

Only possible at Stage Right (seen from Stage) – no mixing console in house
Power: 32 A CEE 3ph

PA (L'Acoustics)

12 Kiva Line Array 2x 6,5" / 1x 1,5"
4 Kilo LF-Extension. 1x 12"
4 SB18 Subs 1x 18"
2 12XT Nearfills 1x 12" / 1x 3"
2 8XT Outfills 1x 8" / 1x 1,5"

Amping

4 LA4 (PA)
3 MC²E25 (Wedges)
1 Crest CC5500 (Drumfill)

Monitors

8 Martin Audio LE1200 1x 12" / 1x 1,4"
1 Martin Audio S-18 1x 18"

Microphones

1 Shure Beta 52A
2 Shure Beta 91A
2 Shure Beta 58A
2 Shure Beta 57A
1 Shure Beta 87A
8 Shure SM58
6 Shure SM57
4 Sennheiser e604
2 Sennheiser e606
2 Sennheiser MD421
6 Røde NT5

DI

7 Palmer DI-Box active
3 Palmer DI-Box passive
2 Palmer DI-Box passive stereo

Stands

1 Kick Mic Stand
11 Small Boom
11 Tall Boom
6 Straight Round Base

Riser

3 Drum-Rollriser 2m x 2m x 20cm
+ various Kleu Riser available

only on request:

DJ-Equipment

1 Pioneer DJM 700

Wireless Microphones

4 Sennheiser SKM 100-835 G3 Handheld (cardioid)
2 Sennheiser SKM 100-845 G3 Handheld (super cardioid)
2 Sennheiser 965 capsule
5 dpa 4066F
6 Sennheiser MKE2-EW-3 Gold
8 Sennheiser SK 100 G3 Bodypack

Grand Piano (440Hz)

Bechstein „Modell EN“
Measurements: 1,6m x 2,8m
Weight: 540kg

LIGHT

FoH

1 Grand MA2 onPC - Command- & Fader-Wing + 2 Touchscreens

Stage & Truss

Moving Lights

2 Martin Atomic 3000 Strobe (1 on request)

4 Martin Mac 700 (2 on request)

8 Martin Mac Quantum Profile

4 GLP Impression RGB 120 RZ

2 GLP Impression RGB 90 LED

Conventional

24 PAR64 as 4 PAR-Bars

12 ETC CE Source Four PAR with clear lenses as 2 PAR-Bars

24 ETC CE Source Four PAR with changeable lenses (on request)

1 Mirrorball 100cm

1 Strand HMI 2,5kW inkl. Rainbow Scroller (on request)

LED

3 ExpoLite TourBar 64 RGBW (on request)

8 ExpoLite TourLED 50 XCR RGBW (on request)

Follow Spot

2 Robert Juliat Super Korrigan 1200W (on request)

An extra operator is needed for each spot!

Power

2x63ACEE3ph

2x63ACEE3ph (on request)

Hazer

2 Smokefactory Tour Hazer II

For concerts we have to book a firefighter.

In case you don't need haze or smoke,

please tell us 2 weeks in advance.

VIDEO

Projection (on request)

1 Opera (Screen) on Stage 5,6m x 5,6m

2 AV Stumpfl Vario32 365x210 FP 16:9

1 Epson EB-L1755U, LCD projector, 15000 ANSI

→ Epson ELPLM15 1.57 - 2,56:1 (Zoom)

→ Epson EB-LW05 0,76 - 1.07:1 (Wide)

→ Epson ELPLU03 0,48 – 0,57:1 (Ultra-Wide)

1 Projector Stack Frame for Epson

2 Vivitek DH4661Z video projector, 5000 ANSI 1,15-1,9 : 1

Monitors / Screens (on request)

2 Samsung 127cm (50") LED Backlight TV

Streaming & Recording (on request)

2 Blackmagic Design URSA Broadcast Camera

→ 2x Fujinon XA20 sx8.5 BERM-K3 Lens

1 Blackmagic Micro Cinema Camera

→ Walimex Pro 12/3 Fish-Eye Lens

1 Blackmagic ATEM Television Studio Pro 4k

1 Lilliput BM 150- 4KS 15,6"

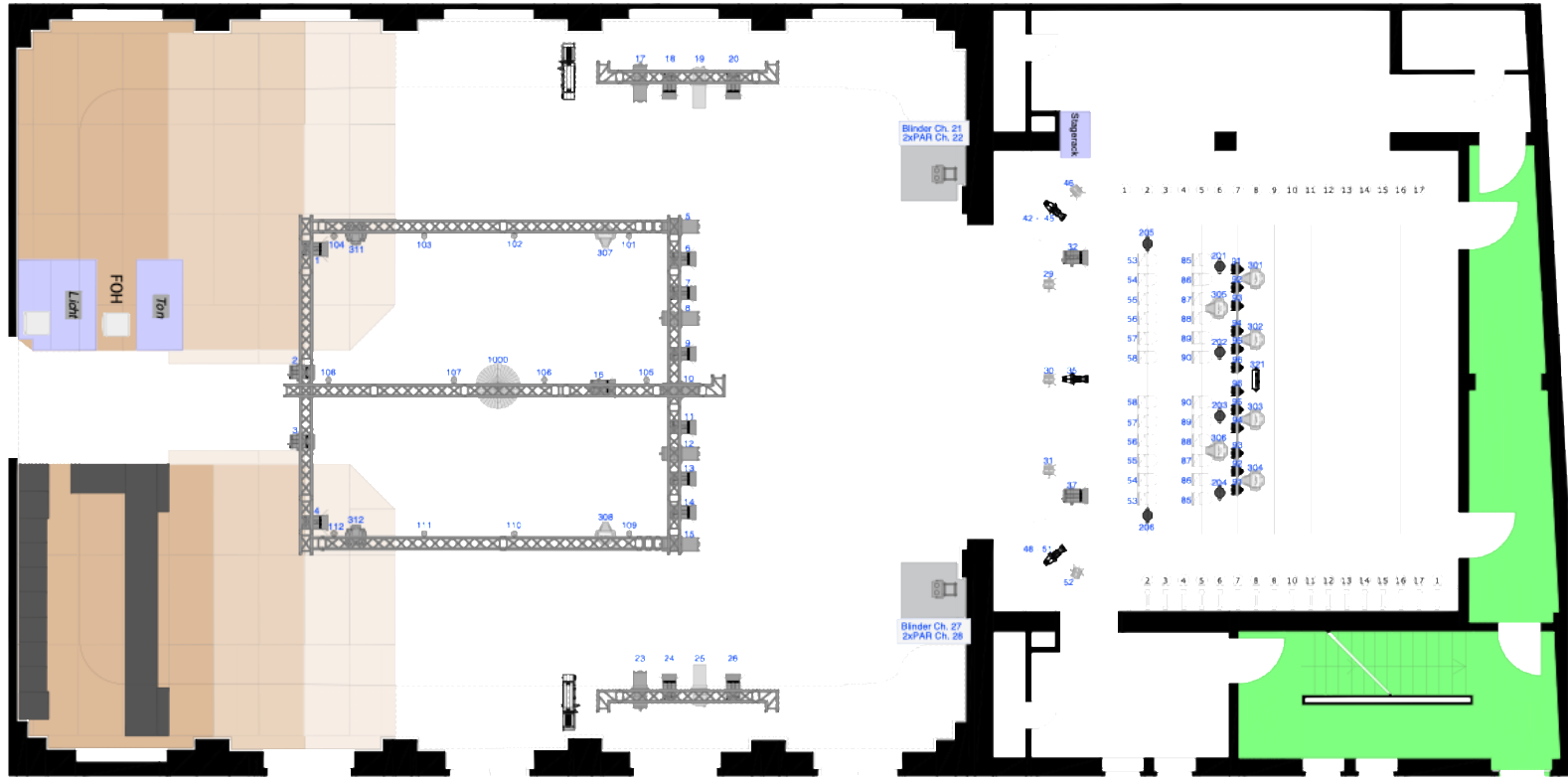
Hardware (on request)

1 Apple Macbook Pro 13"

1 Windows 11 Ryzen5 – RTX 3060

PLAN

This is our standard lighting plot. Any major changes have to be discussed 4 weeks in advance!



-  Strand Alto PC 2kW
-  Strand Alto PC 2kW
-  DTS Flash2000 1300W
-  Mac Quantum Profile
-  GLP Impression 120
205&206 are Impression90
-  Cadenza 12/22 2kW
-  Source4 PAR-EA 750W
-  Atomic 3000 3kW
-  Mac 700 Profile
-  Mirrorball Ø100cm
-  Toccata 10/26 2kW
-  ARRI ST1 1000W
-  PAR64 1kW
-  Juliet Korrigan Follow-Spot

